

LUMEX INSTRUMENTS

Software

FluoRate

**GUIDELINES ON SOFTWARE INSTALLATION
AND INSTRUMENT CONNECTION**

350.00.00.00.00 IN

2023

Please read attentively these Guidelines before installing or starting the software. Lumex Instruments shall not be liable for any damages suffered because of non-compliance with these guidelines.

Read and accept the license agreement before starting work with the software.

No part of these Guidelines may be reproduced or transmitted in any form or by any means neither electronically nor mechanically without the prior written permission of Lumex Instruments.

Contact us at sales@lumexinstruments.com

Welcome to our Website www.lumexinstruments.com

Version 2.0

Date: 2023-01-16

FluoRate software installation and instrument connection

If the FluoRate software is not installed on the computer, follow the initial installation instructions. If the FluoRate software is already installed on the computer, to update it, follow the instructions for updating the installed version.

For the initial installation of the FluoRate software, do the following:

- 1 Turn on the personal computer.
- 2 Start the `setup.exe` file from the electronic device which is a mandatory part of the delivery intended for software installation.
- 3 In the opened **Installshield Wizard** window, click the **Next** button.
- 4 In the **License Agreement** window read the text of the license agreement and accept the terms by selecting item **I accept the terms of the license agreement**, then click the **Next** button.
- 5 In the **User Information** window, enter the user's name and the company name, then click the **Next** button.
- 6 In the opened dialog box, indicate the folder to which the FluoRate software files will be installed. The path `C:\Lumex\Fluorate` is offered by default. To change the path, click the **Change** button, select the required folder and click the **Next** button.

It is recommended to choose the folder by default.

- 7 In the next **Select setup** window, select the type of installation. The following options are offered:
 - **Basic** to install all components of the program, operation manual and software user's manual.

- **Custom** to select a set of components to be installed – it is possible to install the software with or without documentation.

It is recommended to choose the **Basic** type. After selection, click the **Next** button.

7. In the opened window click the **Install** button.
8. After the FluoRate installation program has performed all operations, the **Device Driver Installation Wizard** dialog will open. To continue, click the **Next** button.
9. In the **License agreement** window, check the **I accept the terms in the license agreement** box and click the **Next** button.
10. In the next window, click the **Finish** button after the installation of the drivers has been completed. After closing this window, the software will be completely installed.

To upgrade the installed version of the FluoRate software, do the following:

1. Turn on the personal computer.
2. Using a USB interface cable, connect the instrument and the computer by connection the USB-port of the instrument to the computer USB port.
3. Start the setup.exe file from the electronic device.
4. In the opened **Installshield Wizard** software window select an option:
 - **Install** for the initial installation of the software.
 - **Repair** to upgrade the FluoRate software. All archive data remain intact.
 - **Remove** to remove the software from the computer with saving all archives data (in the repos folder).



Please note that after removing the FluoRate software the data archives remain in the repos folder stored in the folder chosen at the previous installation.

5. Click the **Finish** button.

To start the software operation, do the following:

- 1 Connect one end of the USB interface cable (USB A/ USB B type) to the USB connector of the analyzer and connect the other end to a computer USB connector.
- 2 Activate the analyzer according to the *Operation Manual*.
- 3 Turn on the computer by using the power on/off switch. The operating system will load, and the Windows desktop screen will appear.
- 4 Start the FluoRate software. To do this, double left-click the software icon (Fig. 1) on the Windows desktop screen or select the submenu **Programs – Lumex – Fluorate** from the **START** menu and click **Run Fluorate**.
- 5 The **Activation code input** window will open. Enter the activation code supplied with the software kit on the electronic device (Activation code.txt) into the corresponding text box and click the **OK** button. To run the software without the analyzer, click the **Exit** button in the **Activation code input** window. The activation code will be requested again in the Instrument information window for operation with the connected analyzer.



Fig. 1 The FluoRate software icon



Warning:

The activation code protects the software against unauthorized access. This one-time input code is requested only at the first connection of the analyzer to the software.

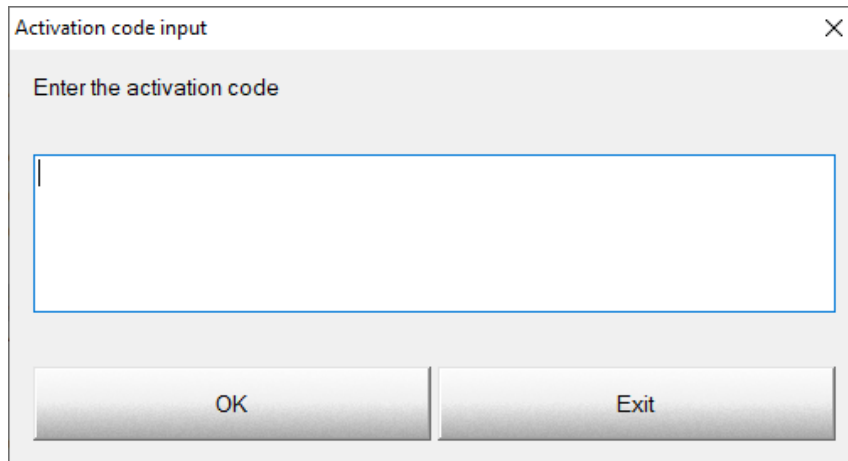


Fig. 2 The activation code input window

The software splash screen will appear (Fig. 3).



Fig. 3 The FluoRate splash screen

The splash screen will automatically disappear in 5 seconds. If you want to remove it faster, place the cursor anywhere on it and click the left mouse button.

After the splash screen disappears, the **Authorization** dialog will open. Choose the user name from the **Name (Login)** dropdown list, enter the password in the **Password** text field and click the **Enter** button. To exit the software, click the **Exit** button.

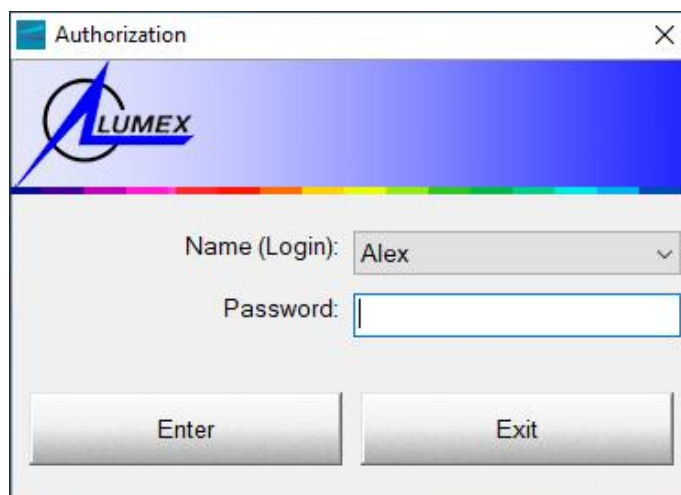


Fig. 4 Authorization dialog

Upon start-up, the software automatically connects to the analyzer provided the activation code was entered according to the 5th step.

After authorization window disappears, the **Main** window will open.

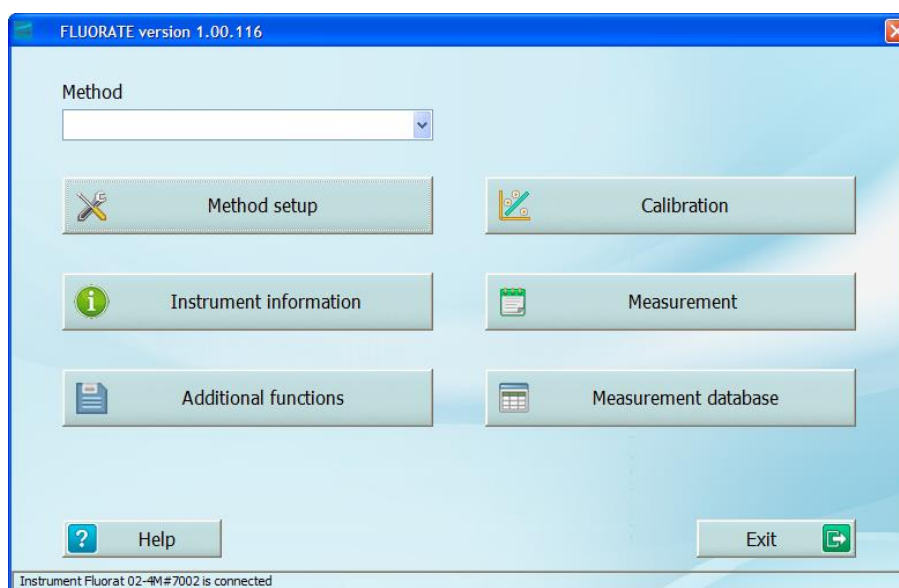


Fig. 5 Main window

When starting the software, it automatically connects to the analyzer provided it is switched on, connected to the PC via the USB cable, and the activation code was entered.

If several switched-on instruments are connected to the PC at the first start of the software, the instrument first appeared at COM-ports polling will be connected.

The instrument operated in the previous session will connect automatically at the next start of the software.

Manual connection (by the operator) of the instrument to the software is required in the following cases:

- if the instrument is connected to the PC after the FluoRate software has been started;
- if the connected to the FluoRate software instrument was switched off or disconnected from the PC, and then switched on or connected to the PC again;
- if one instrument has already been connected to the FluoRate software, but operation with another connected to the PC instrument is required;
- if the activation code was not entered.

To connect the instrument manually and obtain the detailed information on it, click the **Instrument information** button in the **Main** window (Fig. 5). After COM-ports polling the **Instrument information** dialog window displaying all connected to the PC instruments will open (Fig. 6). The information on each instrument type and serial number and the COM-port number will be displayed in this window.

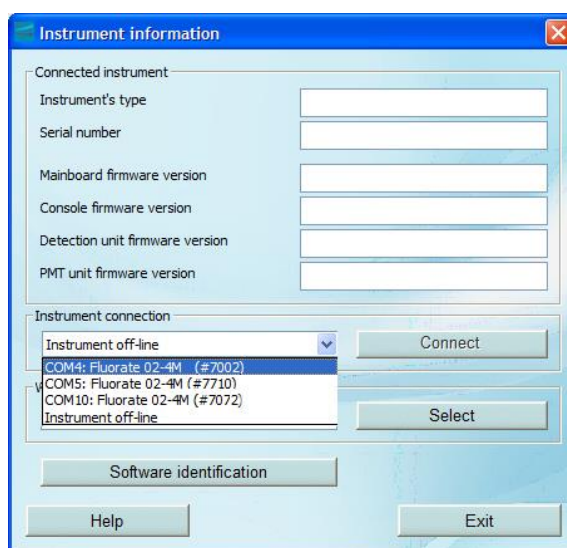


Fig. 6 Instrument information dialog



If the activation code was not entered when starting the software, the *Activation code input* window will appear. After entering the activation code, the analyzer will connect to the software

To connect the required instrument to the software, choose it from the drop-down list and click the **Connect** button. Thereafter the information on the connected instrument will appear (Fig. 7):

- Instrument type;
- Serial number;
- Mainboard firmware version;
- Console firmware version;
- Detection unit firmware version;
- PMT unit firmware version.

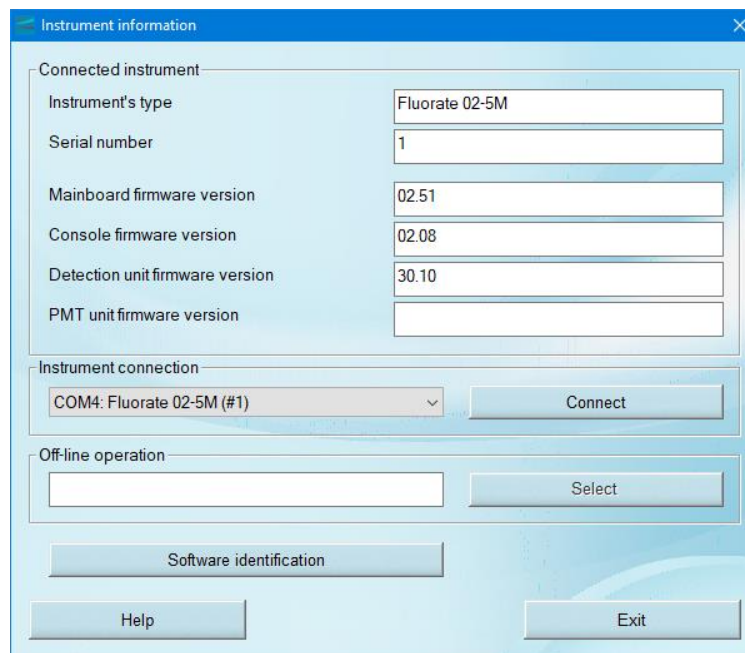


Fig. 7 Instrument information dialog with the instrument connected

The status bar of the **Main** window (Fig. 5) will display the instrument type, serial number and current state (connected, measurement in progress, etc.).



The FluoRate software provides control of only one analyzer connected to it. To operate with another analyzer connected to the PC, connect it to the software.

The analyzer operation must be performed according to the *Operation manual Fluorat 02-4M* or *Operation manual Fluorat 02-5M*, detailed description of the software operation is given in the *FluoRate software user's manual*.

The documentation is installed during the Basic installation of the software, and, if it was marked with a check mark, during a Custom installation in the *Doc* folder of the program directory, where the software was installed (by default, C:/Lumex/Fluorate/Doc).